

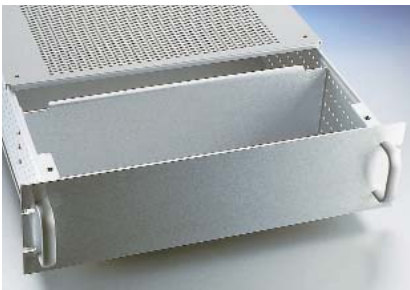


Seven-eighths-spacing Rackmount Kit/Chassis Rackmount Kit

Techmar enclosure designs include interchangeable modular components, punched hole patterns and captive hardware, resulting in a multitude of possible configurations to meet your dimensional and structural requirements. The durable SRK/CRK series aluminum enclosures feature a 7/8" vertical and 1/2" horizontal side frame hole pattern. Double bends in side frames and heavy-duty aluminum alloy materials increase strength and rigidity.

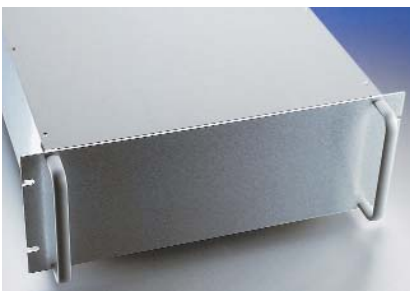
SRK/CRK KIT FEATURES

The modular SRK/CRK series offers a wide variety of assembly options without requiring additional drilling or punching. These durable aluminum enclosures feature unique 7/8" vertical spacing between rows of assembly holes on double bent side frames (half the standard EIA rackmounting height increment) to provide horizontal uniformity. All 28 combinations of four depths and seven heights are stocked for immediate shipping.



SRK Standard Parts

- Front Panel (FP) .125" thick
- Oval Section Handles (OSH), clear anodized
- Side Frames (SF-SE) with 7/8" vertical hole spacing
- Heavy-duty Mounting Panel (HMP)
- Perforated Aluminum Non-sliding Covers (PANC)



CRK Standard Parts

Similar to the SRK model with several exceptions:

- Flanged Full Bottom Plate (FBP) replaces Perforated Aluminum Non-sliding Cover.
- The CRK is not supplied with a top cover.

Materials (all aluminum alloys)

- 6061-T6 front panels, panel ears
- 5052-H32 side frames, mounting panels, rear panels, perforated covers and solid covers
- 6063-T5 handles

Surface

Horizontal grain front panels; etched and grained handles

Finish

Clear anodized covers; clear or black anodized handles; clear chem film (iridite) on other parts

Hardware

Stainless steel hardware included with each kit or part.



HOW TO ORDER

SRK & CRK Kit Selection

Using the dimensional chart, select the chassis that is appropriate for your project. As an aid, refer to the Techmar price list, which clearly defines all standard enclosures. Create your own unique chassis by including options and substitutions in your part number.

Order Codes

Order codes are combinations of part names composed of acronyms and dimensions linked together by dashes. The following section shows how to create order codes for kits in both the SRK and CRK series.

Sample SRK Order Code

SRK-7H-19D

Sample CRK Order Code with Options

CRK-3H-12D-DFP-PANC-OSH-BA

SRK/CRK KIT OPTIONS



The SRK/CRK series come in seven heights and four depths as outlined below. Different option codes may be used to modify any standard kit.

Available Heights and Depths:

KIT DASH NO.	EIA EQUIV. RACK UNITS	FRONT PANEL HEIGHT
-3H	2	3.47
-5H	3	5.22
-7H	4	6.97
-8H	5	8.72
-10H	6	10.47
-12H	7	12.22
-14H	8	13.97



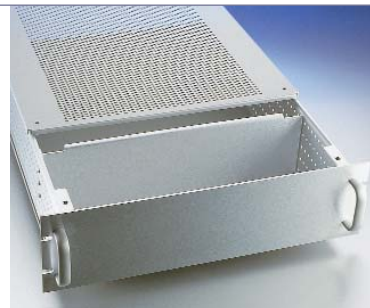
DEPTHS

-12D	-15D	-19D	-24D
------	------	------	------

Options & Substitutions

Standard designated rackmount kits are not necessarily limited and may be modified utilizing substitutions as illustrated below. Techmar rackmount products are designed to meet EIA specifications.

Option	Order Code
3/16"-thick Front Panel	-3/16
Dropdown Front Panel	-DFP
Full Bottom Plate (bottom cover excluded)	-FBP
Oval Section Handles, Black Anodized	-OSH-BA
Solid Aluminum Non-sliding Covers (replaces 1 or 2 perforated covers)	-1:SANC
	-2:SANC
Perforated Aluminum Hook-on Covers (replaces 1 or 2 perforated covers)	-1:PAHC
	-2:PAHC
Solid Side Frames	-SF-SE-S



OVERVIEW OF STANDARD SRK/CRK PARTS

These are the standard parts used in most SRK and CRK kits. Complete descriptions of each part will be covered on the following pages. With a variety of options available for customizing rackmount kits, it may prove easier to order the components individually. Please note that except for slides, which are sold in pairs, all parts are sold as individual units.



Oval Section Handles

(OSH)

Streamlined rounded design eliminates bothersome sharp edges. Available in clear or black anodized.



Front Panel

(FP)

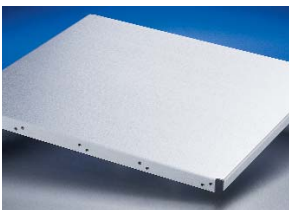
Techmar EIA standard 19" wide, 1/8"-thick notched. Front Panels are available in seven EIA heights.



Side Frame-Seven-Eighths

(SF-SE)

Side Frames have drilled assembly holes with vertical center-to-center spacing of 7/8" to facilitate component mounting and ventilation. Also available solid without perforations.



Full Bottom Plate

(FBP)

Providing a sturdy assembly base for heavy components, the flanged Full Bottom Plate features side frame mounting for added rigidity.



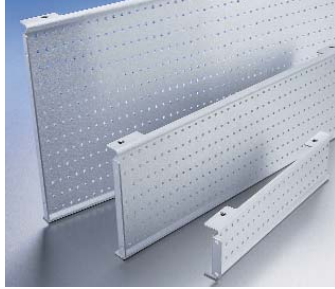
Covers

(PANC) (SANC) (PAHC)

For ventilation, interior component protection or quick access, covers are available perforated (PANC), solid (SANC) or perforated hook-on (PAHC).

SRK/CRK PRODUCT LINE

Side Frame-Seven-Eighths (SF-SE)



Side Frames have drilled assembly holes with vertical center-to-center spacing of 7/8". This dimension is one half the EIA increment and creates uniform spacing, facilitating assembly of internal mounting components. Also available solid without perforations.

Material: 5052-H32 aluminum alloy

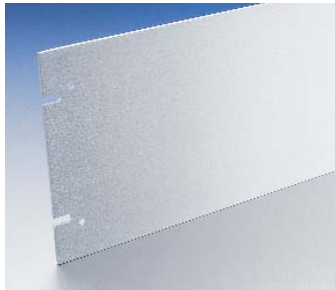
Thickness: .090"

Surface: Horizontal grain

Finish: Clear chem film (iridite)

Hardware: Installed stainless steel captive nuts

Front Panel (FP)



Techmar EIA standard 19"-wide notched Front Panels are available in seven heights for immediate shipping.

Material: 6061-T6 aluminum alloy

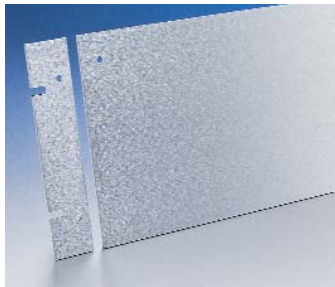
Thickness: 1/8" standard, 3/16" optional

Surface: Horizontal grain

Finish: Clear chem film (iridite)

Hardware: Stainless steel screws and washers

Dropdown Front Panel (DFP)



Dropdown Front Panels consist of two panel ears that assemble to side frames, and a pin-hinged main panel. The main panel is latched with decorative thumbscrews and supported by lanyards when open. Stocked in EIA heights from 3.47" to 13.97."

Material: 6061-T6 aluminum alloy

Thickness: 1/8"

Surface: Horizontal grain

Finish: Clear chem film (iridite)

Hardware: Stainless steel screws, washers, decorative thumbscrews and lanyards



SRK/CRK PRODUCT LINE

Oval Section Handles (OSH)



Streamlined, solid OSH are standard-issue handles for SRK/CRK kits. Five different sizes of OSH are stocked according to their hole center dimensions. Finishes are anodized clear or black. OSH handles mount to the front panel and side frames with no visible hardware.

Material: 6063-T5 aluminum alloy

Surface: Deep etched

Finish: Clear or black anodized

Hardware: Stainless steel screws and washers

Heavy-duty Mounting Panel (HMP)



HMPs function as rear panels and may also be utilized as interior mounting panels for internal components.

NOTE: To assemble the HMP vertically with a Full Bottom Plate (FBP), order the HMP one size smaller than the height of the kit.

Material: 5052-H32 aluminum alloy

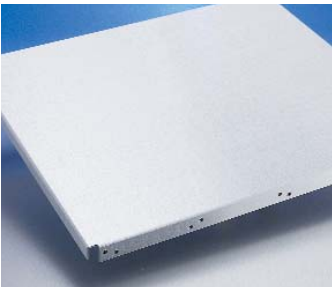
Thickness: .090"

Surface: Horizontal grain

Finish: Clear chem film (iridite)

Hardware: Installed stainless steel captive nuts, oval head screws and washers

Full Bottom Plate (FBP)



Typically used as assembly bases for heavy components, Full Bottom Plates have 90-degree flanges that connect to side frames using screws and captive nuts. Attach the FBP with flanges down or with flanges up for maximum interior height. FBPs are stocked in four depths: 12", 15", 19" and 24".

Material: 5052-H32 aluminum alloy

Thickness: .090"

Surface: Grained

Finish: Clear chem film (iridite)

Hardware: Installed stainless steel captive nuts, screws and washers

SRK/CRK PRODUCT LINE

Covers (PANC) (SANC) (PAHC)



Techmar stocks three types of covers to provide ventilation and protection of internal components.

Material: 5052-H32 aluminum alloy

Thickness: .063"

Surface: Grained and light etched

Finish: Clear anodized

Hardware: Stainless steel flathead screws

- *Perforated Aluminum Non-sliding Covers (PANC)*

PANCs have flanges on all four edges that enhance the strength of the enclosure. Covers screw down to tabs of side frames at each corner.

- *Solid Aluminum Non-sliding Covers (SANC)*

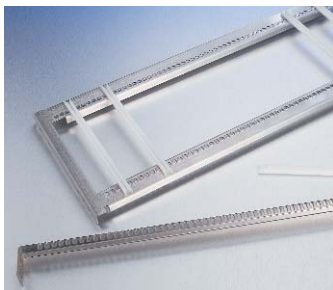
Same as PANC but with no perforations.

- *Perforated Aluminum Hook-on Covers (PAHC)*

PAHCs are secured by hooks at one end of the enclosure and feature thumbholes at the opposite end, enabling quick access to chassis interior.

RACKMOUNT ACCESSORIES

Quarter-inch Card Cage Kits (QCC)



- Quarter-inch spacing between cards increases mounting options.
- Card cages assemble for top, front and rear loading in any Techmar SRK/CRK series chassis.
- Connectors can be mounted either above or below hole flanges on connector rails; the rails can be attached to side frames with the flange up or down.
- Slots in the connector flanges let you assemble card connectors of any length without additional drilling.

NOTE: For front-loading cards, you may want to select a Dropdown Front Panel. For 4-1/2" high front-loading cards using side frames (SF-SE, 7/8" spacing), additional mounting holes must be drilled.

SRK/CRK PRODUCT LINE

CARD CAGE PARTS

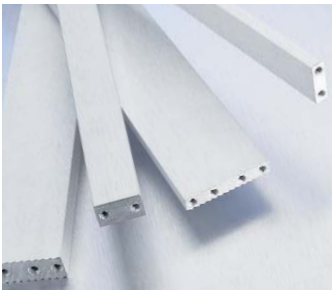
The following lists available parts and their order codes for Techmar Quarter-inch Card Cages.

Material: QGF Guide Frames – 18 gauge stainless steel, QCR Connector Rails – 16 gauge stainless steel

Finish: 100-grit horizontal

Hardware: Stainless steel captive nuts installed, screws and washers, SIG Snap-in Guides

Mounting Bars (MB)



Mounting Bars can be installed to support and position subassemblies. Holes located at Mounting Bar ends align with the assembly holes in side frames.

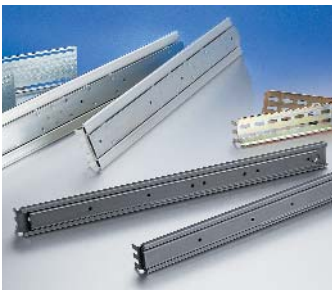
Material: 6061-T6 aluminum alloy

Surface: Deep etched

Finish: Clear chem film (iridite)

Hardware: Stainless steel pan head screws and washers

Slides



Slides include your choice of smooth action, heavy weight-accommodating ball-bearing models or the economical solid-bearing series. Ordered in pairs, they assemble to side frames with flat mounting adapters, which are provided. Please use the slide selection chart to order.

▪ **QDLS-SB Series:**
Quick Disconnect Locking Slides – Solid Bearing

Material: Cold-rolled steel
Surface: Etched in Chromite

Height: 1.69"
Finish: Poxylube® coated

Thickness: .291" overall
Hardware: Adapters and screws

▪ **QDLS-BB Series:**
Quick Disconnect Locking Slides – Ball Bearing

Material: Cadmium plated steel
Thickness: .38" Overall

Height: 3.25" (should not be
Surface: Iridite Dipped

used with 3.47" side
Hardware: Adapters and screws
frames)